



INTEGRAL DRIVER

LIGHTING ASSEMBLY

The Spartan Sports Lighting Integral Driver Assembly delivers a turnkey solution for any sports field application, large or small. Complete with only four components needed for installation, the Spartan Integral Assembly saves time and money on a job site while delivering a clean and high-performance system. The integrally-mounted driver box makes the Spartan Integral Assembly perfect for any new construction or retrofit project.

Composed of fully pre-aimed, high-performance STRATOS Integral Driver Sports Lights, pre-wired steel cross arms, a direct embedded, lifetime warrantied, StressCrete spun concrete pole, and fully customized controls; the ease of installation and system longevity is second to none.

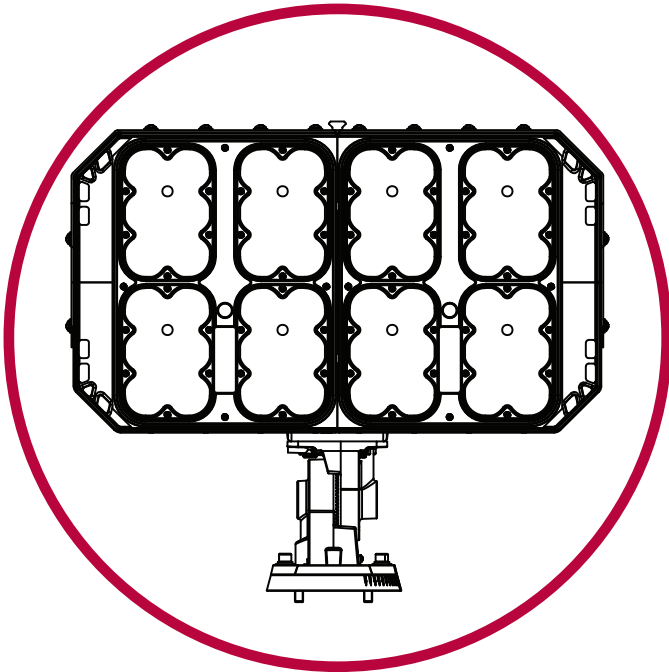
INTEGRAL ASSEMBLY FEATURES

- Complete turnkey solution
- Easy and quick 5-step installation
- No need for costly concrete foundations



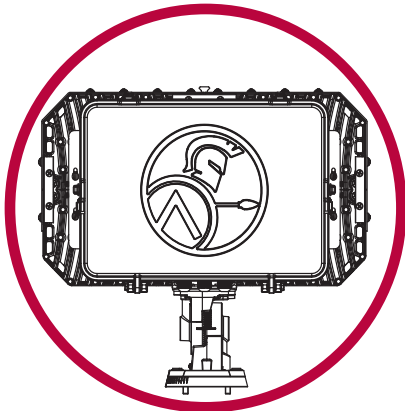
FEATURE HIGHLIGHTS

INTEGRAL DRIVER ASSEMBLY



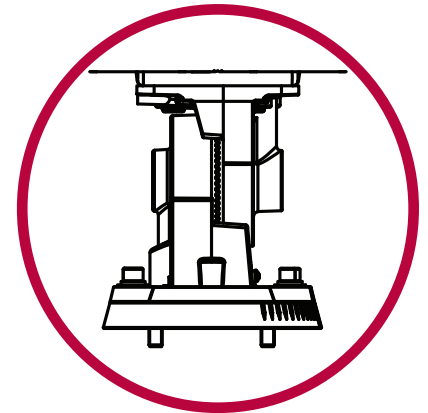
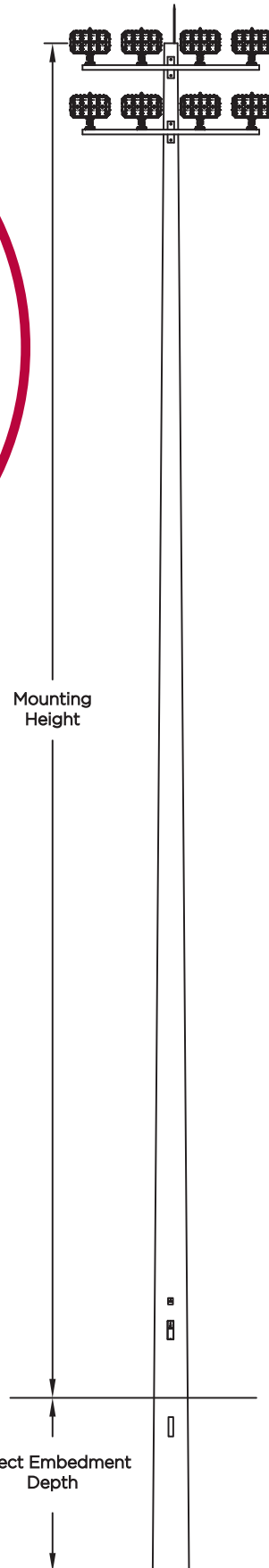
STRATOS Light

- Robust aluminum housing
- Proprietary Spartan optics
- 4000 K or 5700 K option
- 300W, 450W, 600W, 750W, 1000W option



Spartan Integral Driver

- Integral driver mounted on back of light
- NEMA 4x rated
- Pre-wired and configured
- Dim-to-off controls



Pre-aimed Mounting Knuckle

- Factory aimed
- Die cast aluminum
- Integrated degree markings

Spartan Cross Arm

- Pre-wired
- High-strength galvanized steel

StressCrete Pole

- Prestressed, centrifugally spun concrete pole
- Standard lifetime warranty

HOW TO ORDER

INTEGRAL DRIVER ASSEMBLY

