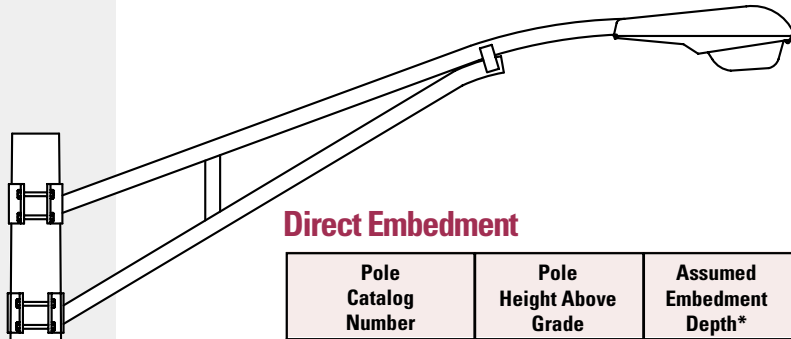
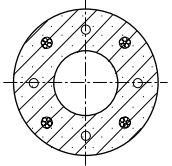


# Round Class C - Heavy Duty Pole

## Round, Class C - Heavy Duty Pole

### Physical Details:

- Round symmetrically tapered shaft.
- 6.5" diameter pole tip.
- 0.18" per linear ft. taper increase.
- 1200 lb. transverse bending strength (2 ft. from tip).
- Mold finish is standard but optional etched Decor colors are available.
- For various luminaire mounting details, please reference arms and accessories.



### Direct Embedment

Pole Catalog Number	Pole Height Above Grade	Assumed Embedment Depth*	Overall Pole Length	Pole Butt Diameter (Inches)	Ultimate Ground-Line Moment (ft. lbs.**)	Nominal Weight (lbs.)
E-300-CPR-G	25' 0"	5' 0"	30' 0"	11.90	27600	1650
E-325-CPR-G	27' 0"	5' 6"	32' 6"	12.35	30000	1855
E-350-CPR-G	29' 6"	5' 6"	35' 0"	12.80	33000	2050
E-375-CPR-G	32' 0"	5' 6"	37' 6"	13.25	36000	2295
E-400-CPR-G	34' 0"	6' 0"	40' 0"	13.70	38400	2655
E-425-CPR-G	36' 6"	6' 0"	42' 6"	14.15	41400	2940
E-450-CPR-G	39' 0"	6' 0"	45' 0"	14.60	44400	3235
E-475-CPR-G	40' 6"	7' 0"	47' 6"	15.05	46200	3545
E-500-CPR-G	43' 0"	7' 0"	50' 0"	15.50	49200	3870

### Base Plate

Pole Catalog Number	Pole Height Above Grade	Pole Butt Diameter (Inches)	Base Plate Size (Inches)	Bolt Circle*** (Inches)	Ultimate Ground-Line Moment (ft. lbs.**)	Nominal Weight (lbs.)
P-300-CPR-G	30' 0"	11.90	14.5 x 14.5	17	33600	1730
P-325-CPR-G	32' 6"	12.35	14.5 x 14.5	17	36600	1940
P-350-CPR-G	35' 0"	12.80	14.5 x 14.5	17	39600	2145
P-375-CPR-G	37' 6"	13.25	14.5 x 14.5	17	42600	2390
P-400-CPR-G	40' 0"	13.70	14.5 x 14.5	17	45600	2750
P-425-CPR-G	42' 6"	14.15	16 x 16	18	48600	3065
P-450-CPR-G	45' 0"	14.60	16 x 16	18	51600	3360

\* Recommended burial depth for normal soils. Where large imbalanced loads are applied or soil strength is questionable, deeper burial may be necessary.

\*\* Ultimate Ground Line Moment = Height above grade minus 2 ft x transverse bending strength.

\*\*\* Anchor bolt information - 17" and 18" BC'S use 1" x 36" anchor bolts.

### Class - EPA Loading

	Pole Height Above Grade	Post Top & Bal. Loads	Imbalanced Loads			
			8' arm	10 arm	12' arm	15' arm
90 mph	30	33	30	28 3/4	27 1/4	24 3/4
	35	31 1/2	29	28	26 3/4	24 1/2
	40	30	28	27	26	24 1/4
	45	28 1/2	26 3/4	26	25	23 1/2
100 mph	30	26 1/4	24	22 1/4	21 1/4	19
	35	24 3/4	22 3/4	21 1/2	20 1/2	18 3/4
	40	23 1/4	21 1/2	20 3/4	19 3/4	18 1/4
	45	21 3/4	20 1/4	19 1/2	19	17 1/2
110 mph	30	21	19	17 1/2	16 1/2	14 3/4
	35	19 1/2	18	16 3/4	16	14 1/2
	40	18	16 3/4	16	15 1/4	14
	45	16 3/4	15 1/2	15	14 1/4	13 1/4
120 mph	30	17	15 1/4	13 3/4	13	11 1/2
	35	15 1/2	14 1/4	13	12 1/4	11 1/4
	40	14 1/4	13	12 1/4	11 3/4	10 3/4
	45	12 3/4	11 3/4	11 1/4	10 3/4	10
130 mph	30	13 3/4	12 1/4	11	10 1/4	9
	35	12 1/2	11 1/4	10 1/4	9 3/4	8 1/2
	40	11	10	9 1/2	9	8
	45	9 3/4	9	8 1/2	8 1/4	7 1/4
140 mph	30	11 1/4	10	8 3/4	8	7
	35	10	9	8	7 1/2	6 1/4
	40	8 3/4	9 3/4	7 1/4	6 3/4	6
	45	7 1/2	6 3/4	6 1/4	6	5 1/4
150 mph	30	9	8	6 3/4	6 1/4	5 1/2
	35	8	7	6 1/4	5 3/4	5
	40	6 3/4	6	5 1/2	5	5 1/2
	45	5 1/2	4 3/4	4 1/2	4 1/4	3 3/4

### Decor Colors & Finishes

Color	Eclipse (Black)	Ash White	Pearl Gray	Dusty Rose	Aztec Jade (Green)	Desert Sand (Buff)	Saluki Bronze (Brown)
Finish	E11	E35	E40	E41	E51	E70	E90
Etched Finish	E11	E35	E40	E41	E51	E70	E90

Mold finish, catalog #M00, is standard on all poles. Decor colors and finishes must be specified. A clear acrylic coating is standard on all Decor poles.

◀ When selecting a pole strength class, care must be taken to ensure it will carry the desired EPA loading of arm and luminaire for the wind conditions at your location. If you are unsure of your location's wind condition, please reference Isotach Map in General and Technical section.



## Streetlighting Arms and Accessories

Spun concrete poles can be adapted to fit most arms or accessories. Our standards are detailed in the "Arms and Accessories" section of this catalog. If a specific item is not shown, please call your local representative or our sales office.

When requesting StressCrete to supply arms, please ensure compatibility with luminaire.

## Finishes

Mold finish is standard on all poles. If a Decor or custom finish is desired it must be specified in the pole catalog number. Please see lower right front page for information, or turn to Decor section.

## Standard Openings and Handholes

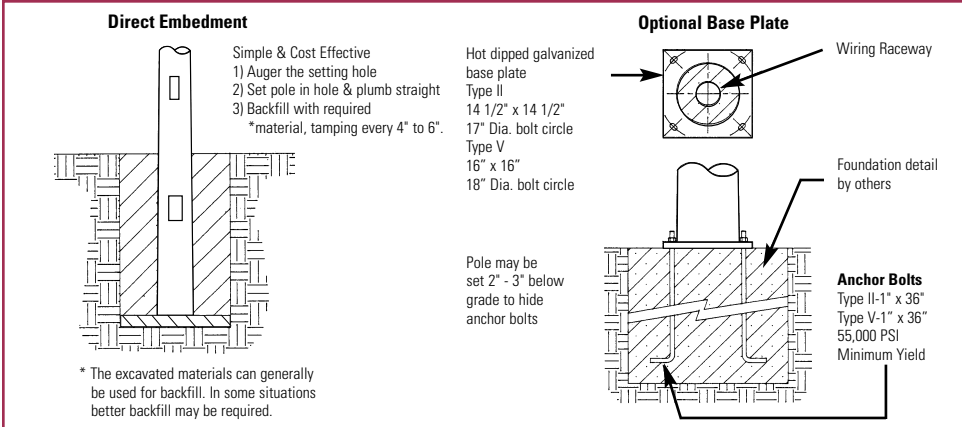
(For more detailed information, please reference General and Technical section.)

- 2 1/2" x 8" is the standard handhole box located 18" above grade. Both it and the tight fitting coverplate are available in non-metallic, non-conductive injection molded material or a rugged high density cast zinc.
- Standard coverplate fasteners are 1/4" stainless steel with either Allen (hex) head for the United States or black Robertson #3 (square) head in Canada. Tamperproof and non-standard fasteners are available but must be specified.
- Standard above grade wiring apertures vary with arm selection but are generally 1 1/4" diameter holes or 1 1/2" x 3" openings. Below grade apertures are 2 1/2" x 5" double openings 18" below grade in line with handhole.
- Non-standard sizes can be made available on request; please contact our sales office.
- Galvanized steel or zinc inserts are available in 1/8" increments from 1/4" through 3/4".
- Through holes are nominal 1/2", 3/4", or 1".

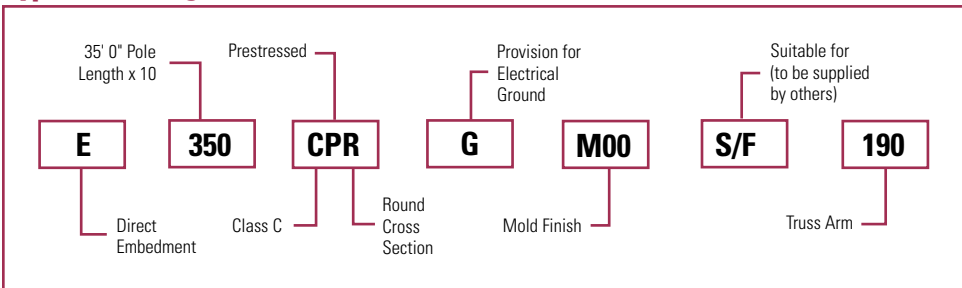
## Electrical Grounding

The last letter of our pole catalog number "G" specifies that the pole will be supplied complete with a #6 stranded copper ground wire. When properly connected, this will electrically ground the pole. If pole is not to be electrically grounded, simply delete the letter "G" from the catalog number.

## Footings

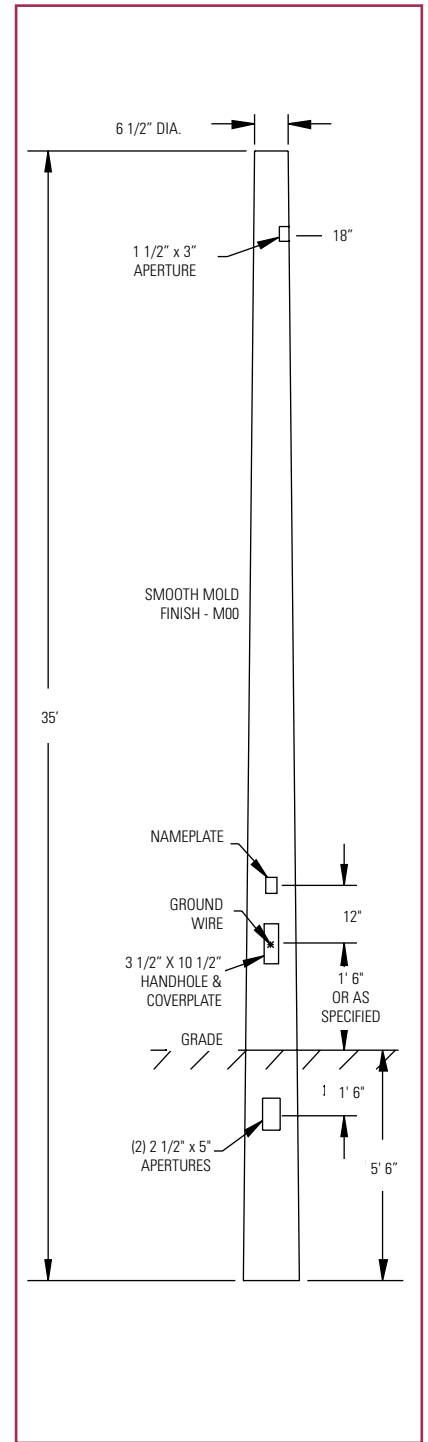


## Typical Catalog Numbers



### Typical for all types:

1. Select footing type - direct embedment or base plate.
2. Select pole length - if direct embedded allow for embedment length.
3. Select shape and strength of pole.
4. If required, select provision for electrical grounding of pole.
5. If desired, select Decor color and finish.
6. Select luminaire mounting style - see arms and accessories.



StressCrete