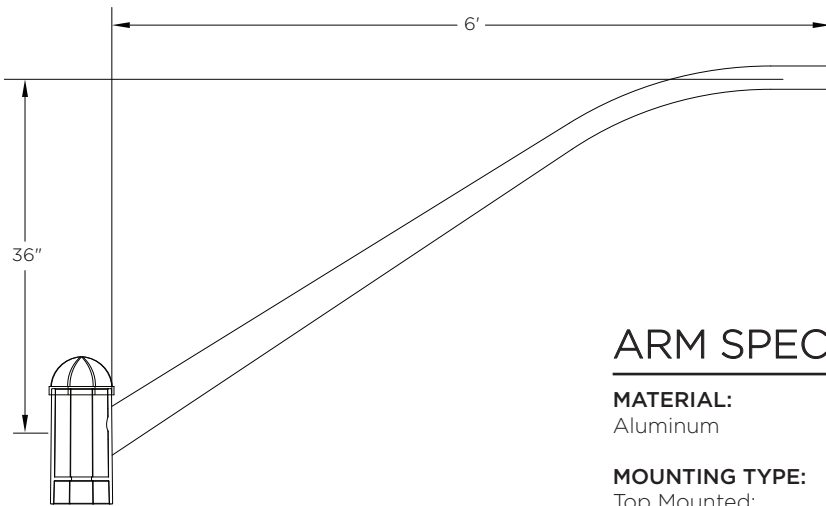


# KA100 // THE ELLIPTICAL (TOP MOUNT)

STREET LIGHT ARM



The King Luminaire KA100 Arm is designed for functionality. This aluminum arm is available in a variety of lengths single and double arm configurations. The KA100 provides a dependable solution for your street lighting needs.

## ARM SPECIFICATIONS

**MATERIAL:**  
Aluminum

**MOUNTING TYPE:**  
Top Mounted:  
Octagonal  
Round

**ARM QUANTITY:**  
Single  
Double

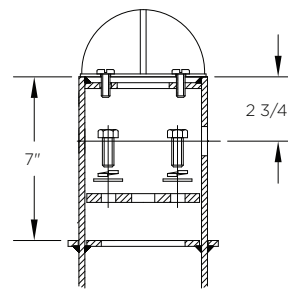
**ARM LENGTHS:**  
4', 6' and 8'

**FINISH:**  
Available in textured or smooth.

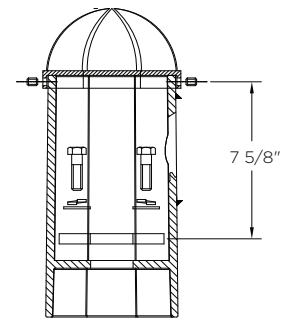
**EPA**  
1.72 - 5.83 sq. ft.

**WEIGHT**  
18 - 39 lbs

### MOUNTING TYPES:



Top Mounted (Round)



Top Mounted (Octagonal)

### ARM DIMENSIONS:

Run	Rise
4'	24"
6'	36"
8'	48"

### LEVELING DEVICE:



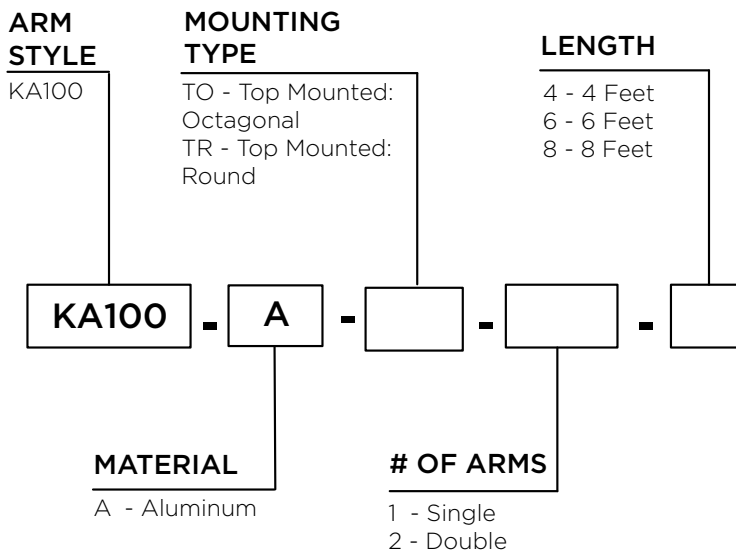
KPL20



KPL30

\*See leveling device spec sheet for more options

## HOW TO ORDER



## EPA & WEIGHT

Catalog Number	Mount Type	# of Arms	L. (ft)	EPA (sq ft)	Wt. (lbs)
KA100-A-TO-1-4	TO	1	4	1.72	18
KA100-A-TO-1-6	TO	1	6	2.54	24
KA100-A-TO-1-8	TO	1	8	3.25	27
KA100-A-TO-2-4	TO	2	4	2.77	24
KA100-A-TO-2-6	TO	2	6	4.41	33
KA100-A-TO-2-8	TO	2	8	5.83	39
KA100-A-TR-1-4	TR	1	4	1.72	18
KS100-A-TR-1-6	TR	1	6	2.54	24
KA100-A-TR-1-8	TR	1	8	3.25	27
KA100-A-TR-2-4	TR	2	4	2.77	24
KA100-A-TR-2-6	TR	2	6	4.41	33
KA100-A-TR-2-8	TR	2	8	5.83	39

# CONFIGURATION OPTIONS

## KA100 THE ELLIPTICAL (TOP MOUNT)

